

Safer Care North East
'working together for Safe Care'

Emma Marsden
Patient Safety Programme Manager
NHS North East



Step approach to patient safety: NHS North East Vision 7 No's

- No barriers to health and well being
- **No avoidable deaths, injury or illness**
- No avoidable suffering or pain
- No helplessness
- No unnecessary waiting or delays
- No waste
- No inequality



Patient Safety Strategic Forum

- Chaired by a local Chief Executive Officer, Jim Mackey, Northumbria Healthcare NHS Foundation Trust;
- Executive membership
- Development of *Safer Care* Strategy



Patient Safety Strategic Framework

Identified Priority Clinical Themes

Managing the deteriorating patient

Healthcare Associated Infections

Care transfers and discharges

Falls

Safe surgical procedures

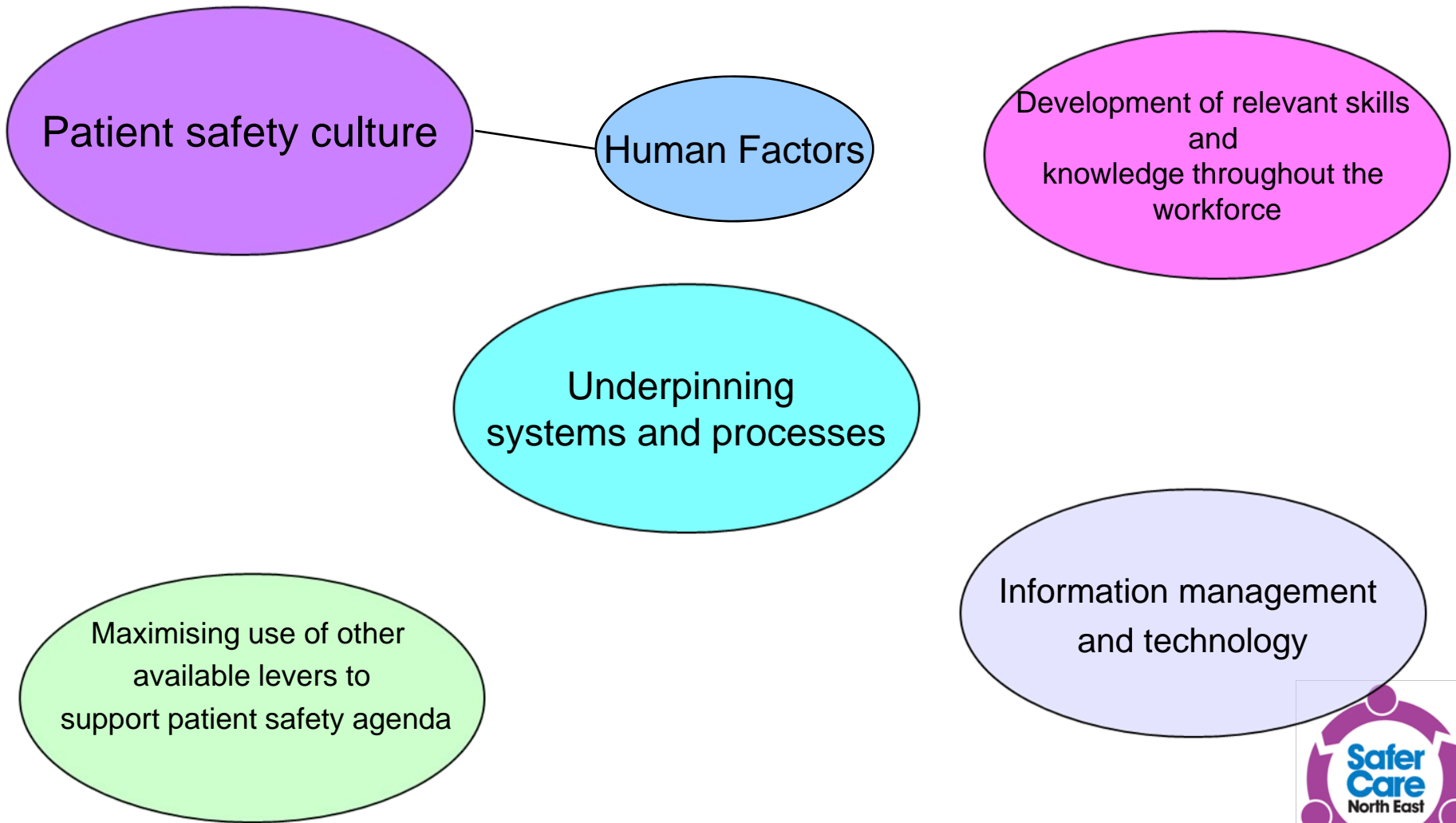
Suicide

Drug safety issues

Mortality Rates

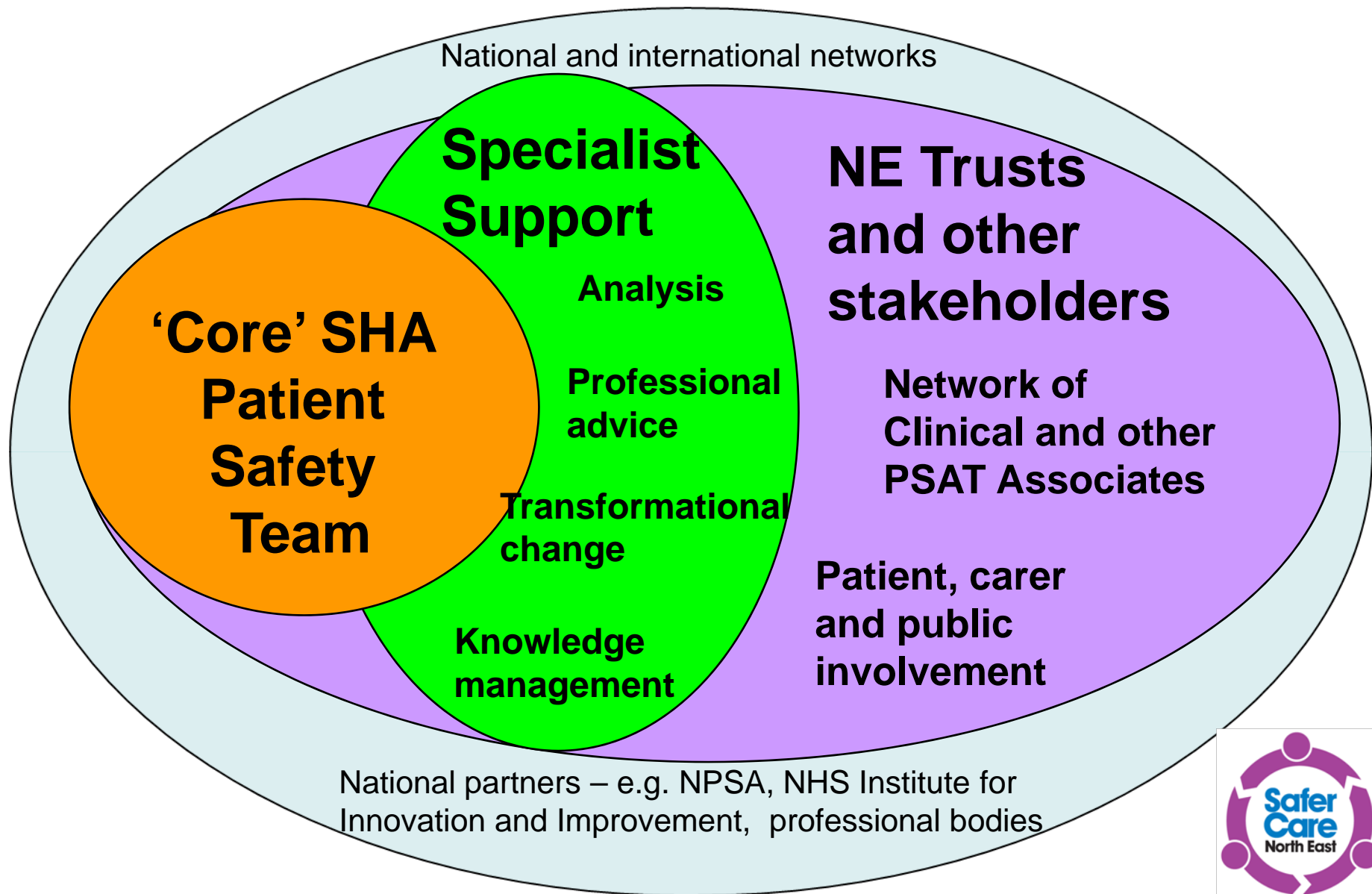
Safer Care North East

Key Enablers



The North East Patient Safety Action Team

Partnership for Patient Safety



Associate Role

- From Trusts, Universities and Partner Organisations;
- Experienced Clinicians, Managers and others with a keen interest in patient safety;
- Patients, carers and public with an interest and/or experience of clinical themes – Safer Care NE Patient Champions network;
- Facilitate the implementation of the Safer Care Strategy locally and regionally;
- Contribute to the National developments



How do we embed Human Factors?

Proposed Programme:

- Raising awareness and interest in the work;
- Providing specific HF training to those leads for *Safer Care North East* and *'Our Vision Our Future'*;
- Identify an appropriate area to undertake a pilot project with clinical teams;
- Provide ad-hoc support and advice to the Clinical Theme Groups

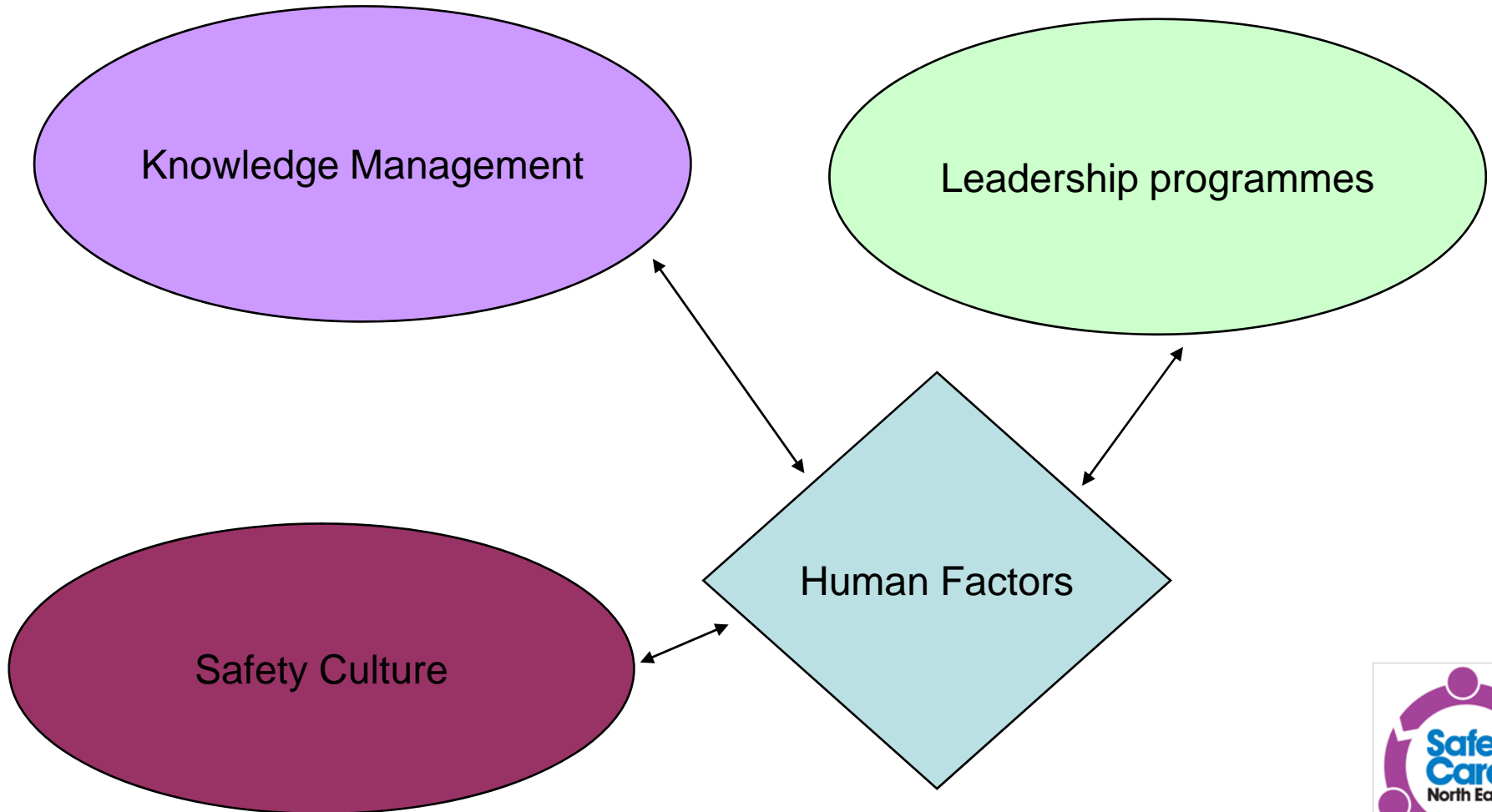


Eager Clinicians, its already happening on a small scale...

- Certain departments within local Trusts are implementing the SBAR tool;
- SHA have supported FMEA at local hospital with Diabetologists, Specialist Nurses, Pharmacy and Ward Staff;
- Supporting After Action Review roll out with a local Mental Health Trust as part of programme



Not forgetting the Strategic elements...



Thank you

Any Questions?

